

680 XD



GEOLINER® 680 XD FULLY FEATURED, HIGHLY ACCURATE WHEEL ALIGNMENT SYSTEMS

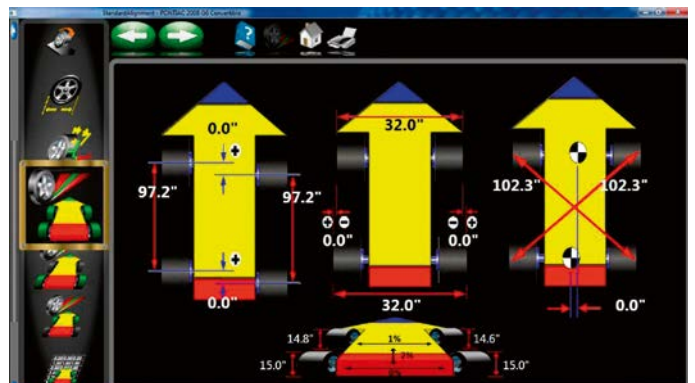
VERSATILE, ACCURATE HARDWARE

- High-resolution cameras produce accurate, live alignment readings and diagnostic data
- Passive front and rear XD targets improve durability with no electronics to damage
- Advanced XD targets and AC400 clamps are lightweight, durable and impact resistant

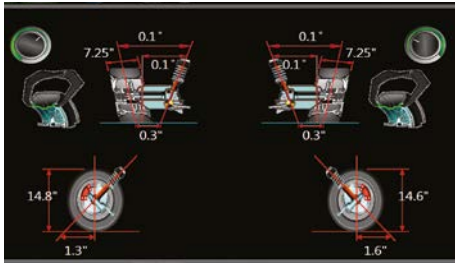
ADVANCED DIMENSIONING* WITH THE SOFTWARE PRO42 PLATINUM

- Cross-diagonal* measurements identify frame or structural damage
- Measurement of vehicle dimensions such as track width and wheel base as well as cross-diagonal* measurement identify frame or structural damage.
- The wheels-off mode facilitates access to and adjustment of components otherwise difficult to reach.

* Patented and/or patent-pending features



GEOLINER® 680 XD EXCLUSIVE PLATINUM FEATURES

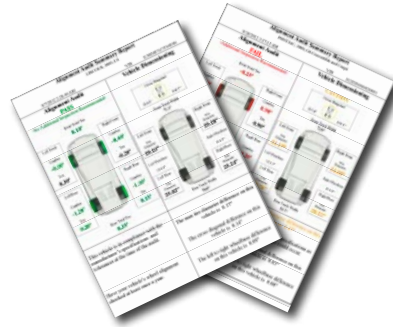


Advanced measurements

- Measurement design for advanced suspension trouble-shooting and modified suspensions. Includes advanced ride height entry, ProAckermann, graphical caster trail, scrub radius and SAI

Quick alignment check

- Quickly identifies if a car needs alignment. Includes audit print-out to assist in the sale of services. Audit print-out allows dimensions and alignment to be shown on one simple print-out, perfect for collaboration with body shops



AC400 clamps with XD targets

Weighing in at 3.3 kg (6.9 lbs) and measuring only 152 x 203 mm (6" x 8") in the front and rear, the AC400/XD package is the smallest and lightest we've ever made

Ride height* measurement

Measure ride height and obtain proper alignment specs for those vehicles requiring it

EZ-Toe*

Turn the front wheels and access difficult adjustment points while still displaying centred toe readings

User-friendly interface

Use available step-by-step instructions as a guide for completing even the most complex tasks

Manufacturer specs

Extensive OEM specs allow quick and accurate vehicle selection

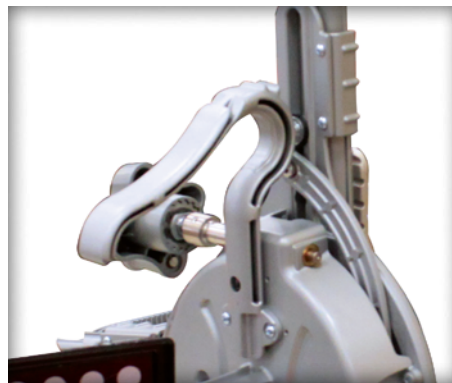
VODI™

Vehicle Orientation Directional Indicator* – guides the technician through the measurement process

Help videos

View detailed videos of how to make needed adjustments to complete even the most complex tasks

AVAILABLE WITH THE HOFMANN AC400 QUICK WHEEL CLAMPS



Secure clamping without touching the rim

- Only the tyre is contacted
- Clutch limited clamping force ensures accurate and repeatable results
- Durable and lightweight magnesium construction
- Alternatively, AC100 universal wheel clamps made of cast aluminum, with no limitation on tyre diameter

AC400: fast and easy to use

- Clamping is accomplished with a single fast-action adjustment knob
- No accessories needed to accommodate the full range of tyre sizes
- Large, comfortable handle allows ergonomic use
- XD targets are lighter and take up less space than previous designs

* Patented and/or patent-pending features

680 XD



geoliner®

WHEEL ALIGNMENT SYSTEMS

TECHNICAL DATA

| | |
|--------------------|---------------------------------|
| Track width | 122 cm – 244 cm (48" – 96") |
| Wheelbase | 201 cm – 457 cm (79" – 180") |
| Shipping weight | 202 kg |
| Power requirements | 230 V 1 ph 50–60 Hz |

Technical Data AC400

| | |
|----------------|----------------------------------|
| Tyre diameter | 48.3 cm – 99.1 cm (19" – 39") |
| Weight | 3.13 kg |
| Clamping force | 164.6 N |
| Construction | Cast magnesium |

Technical Data AC100

| | |
|--------------------|----------------|
| Rim clamping range | 11" – 22" |
| Weight | 4.9 to 5.2 kg |
| Construction | Cast aluminium |

Standard accessories

Wheel clamps & targets
Steering wheel holder
Brake pedal depressor
Two wheel chocks
Colour printer

* Standard with geoliner® 680 XD AC100

** Standard with geoliner® 680 XD AC400

OPTIONAL ACCESSORIES

AC100 universal wheel clamp kit*
EAK0320J36A

AC400 wheel clamp kit**
EAK0320J35A

Mobility kit
EAK0320J78A

Drive-on camera aid
EAK0289J91A

Hub adaptor kit for wheels-off alignment (AC100/AC400)
EAK0222J83B

AC100 universal wheel clamp extension kit
30926

AC400 dual wheel adaptor kit
EAK0305J50A

Dual tall support kit
EAK0289J80A

Centre tall support kit
4031236

Dual short support kit
EAK0289J81A

Centre short support kit
4031234

Tilt camera beam
4031154

EMEA-JA

Snap-on Equipment s.r.l. - Via Prov. Carpi, 33 - 42015 Correggio (RE)
Phone: +39 0522 733-411 - Fax: +39 0522 733-479 - www.hofmann-europe.com

Austria

Snap-on Equipment Austria GmbH - Hauptstrasse 24/Top 14 - A-2880 St. Corona/Wechsel (RE)
Phone: +43 1 865 97 84 - Fax: +43 1 865 97 84 29 - www.hofmann-europe.com

France

Snap-on Equipment France - ZA du Vert Galant - 15, rue de la Guivernone BP 97175
Saint-Ouen-l'Aumône - 95056 Cergy-Pontoise CEDEX
Phone: +33 134 48 58-78 - Fax: +33 134 48 58-70 - www.hofmann-france.fr

Germany

Snap-on Equipment GmbH - Konrad-Zuse-Straße 1 - 84579 Unterneukirchen
Phone: +49 8634 622-0 - Fax: +49 8634 5501 - www.hofmann-deutschland.com

Italy

Snap-on Equipment s.r.l. - Via Prov. Carpi, 33 - 42015 Correggio (RE)
Phone: +39 0522 733-411 - Fax: +39 0522 733-410 - www.hofmann-italia.com

United Kingdom

Snap-on Equipment Ltd. - Unit 17 Denney Road, King's Lynn - Norfolk PE30 4HG
Phone: +44 118 929-6811 - Fax: +44 118 966-4369 - www.snapon-equipment.co.uk

