

geoliner[®] 580 prism *geoliner[®] 580 prism ELITE*

WHEEL
ALIGNMENT

Professional
wheel alignment
with two-camera
technology



Two-camera technology at its best

Snap-on Equipment has years of experience in developing wheel aligners as the pioneer of the three-dimensional imaging wheel alignment technology.

Portable wheel aligner

This profound knowledge matched with the advantages of CCD technology has now led to development of the world's first implementation of 100% portable wheel aligner.

The Hofmann geoliner 580 prism uses front-wheel targets and rear-wheel pods (**P**ortable **D**evice) to carry out wheel alignment. With this two-camera technology the optical communication between the front

wheels cannot be interrupted, hence there is no need for spoiler adaptors. This wheel aligner allows measurements up to maximum steer without electronic turntables, which saves relative investment and service / repair costs.

An added advantage is that no electronic components are provided on the front wheels – this saves additional maintenance costs. Owing to the innovative measurement technology of the geoliner 580 prism the steering routine is quickly accomplished. Pods, wheel clamps and targets are easy and simple to handle because they are made of magnesium.

The geoliner 580 prism will enable you to:

- Do alignments quickly from virtually anywhere in your shop.
- Reduce the time required to perform corrective actions.
- Rely on advanced, lightweight components that are designed with the technician in mind.



Good maintainability

No electronic components to be added to front wheels.



User-friendly

The pods are particularly light.



Productivity-enhancing features

Hardware that is built to last

- Advanced design requires pods at rear wheels only, reducing overall component weight by 50%
- Passive front wheel targets improve durability – no electronics to damage
- Magnesium pods, targets and clamps are durable, impact-resistant and lightweight



The geoliner 580 prism is especially flexible as it can be used in different wheel alignment bays – no additional space is needed for this wheel aligner.

The special measurement technology allows alignment of vehicles having a long wheelbase – so one single aligner is sufficient for alignment of vehicles ranging from the Smart car to vans.

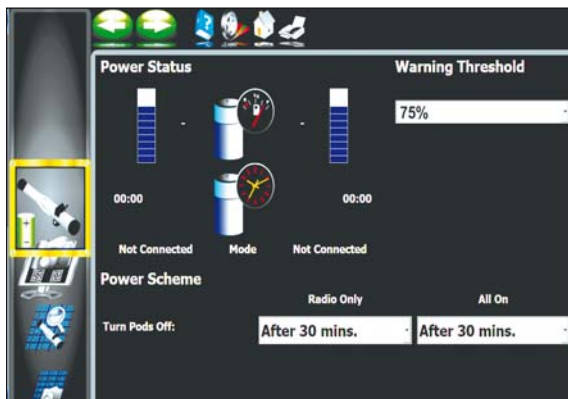
Our modern lithium-ion batteries have an especially long life, providing 24 h service (3 days in case of 3 – 4 alignments per day) with one charge. The batteries are software-controlled, so need for recharging is signalled early enough to avoid interruption of alignment tasks.

The remaining charge is indicated to enable the user to safely complete the alignment.

The self-explanatory menu avoids mistakes on user's end, guiding the user quickly and simply through all measurement sequences



Productivity-enhancing features



Lithium-ion rechargeable battery

- A lithium-ion battery can go up to a full week without recharging
- Battery display on the pod shows the percentage of charge remaining
- Alerts notify the technician when the pods battery reaches a certain discharge level
- Electronic components are designed with ultra-low power requirements to maximise battery performance

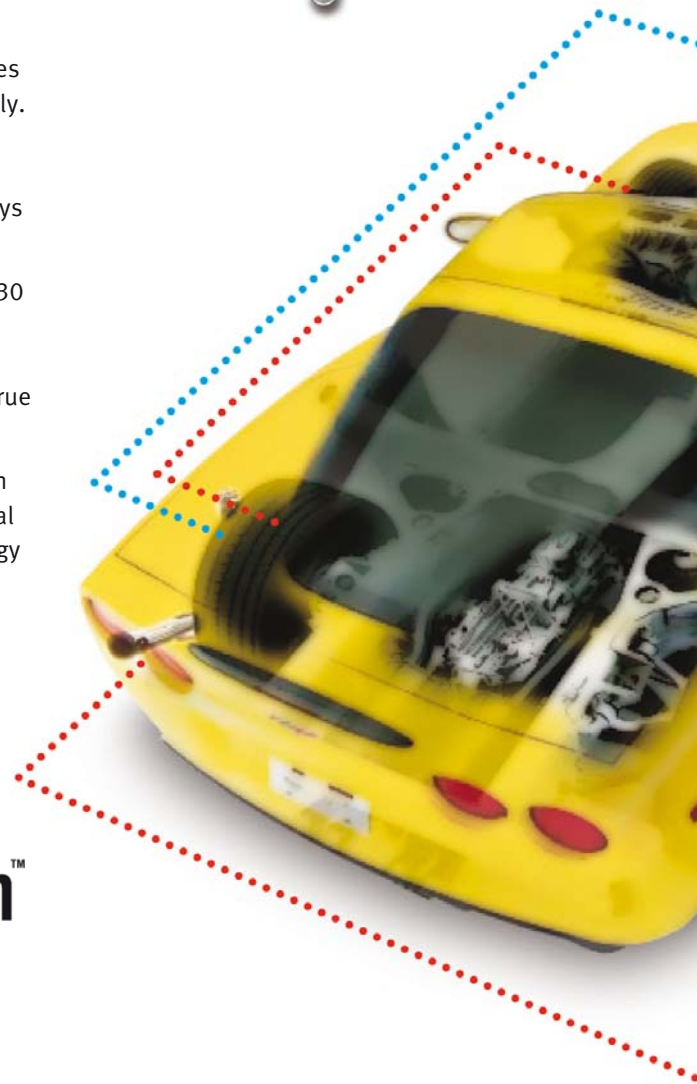
Works in small areas

- Perform alignments literally anywhere in your shop!

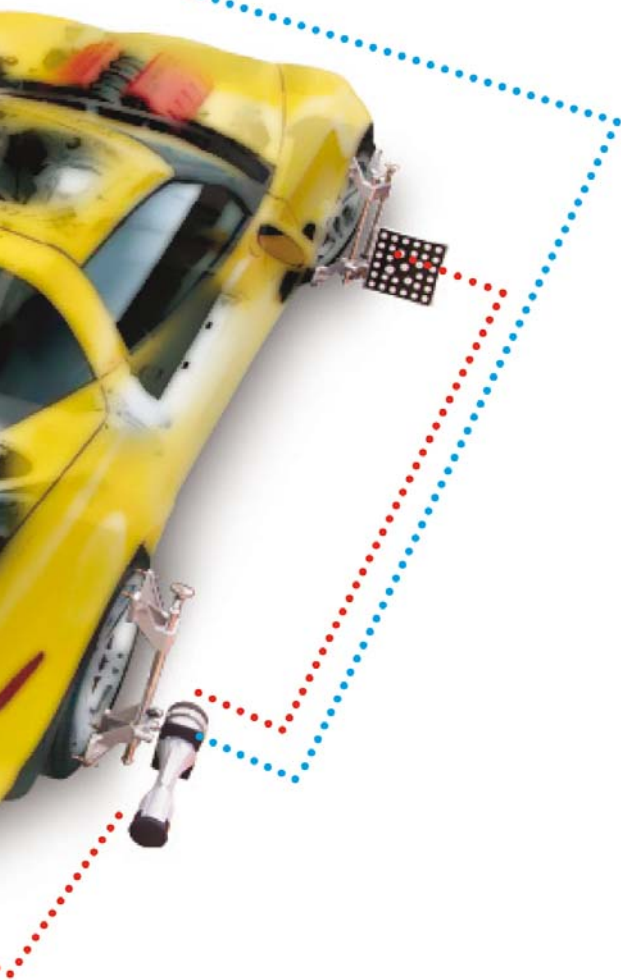
Bluetooth-enabled wireless communication

Bluetooth communication needs no cables, which reduces maintenance work considerably. Owing to the high reliability of data communication, measurement results are always accurate.

- Perform alignments within 330 feet of the control terminal – even in areas that have high electrical interference – for true portability
- Pods communicate with each other and the control terminal using Bluetooth™ technology



Cutting-edge technology



The Pro42 software

- Pro42 is a high-resolution ICON based software program designed to provide the most effective use of information required by the technician. It has all the required functions in a one-touch program format to allow the technician to provide accurate and speedy alignments.
- The software provides unique diagnostic information to allow the technician to easily understand the vehicle problems.



User-friendly interface

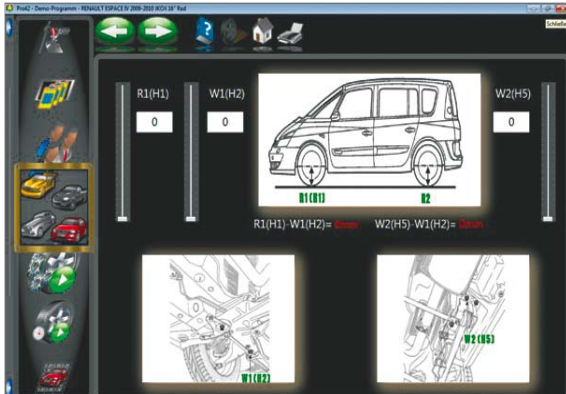
- Make technicians experts with easy-to-use graphics and job aids.
- Use available step-by-step instructions as a guide for completing even the most complex tasks consistently – the first time



Vehicle specs

- Handle virtually any vehicle that comes in the shop.
- Vehicle specifications are sourced directly from the OEMs and are therefore complete, up to date and correct. Complete OEM data and information support alignment of less conventional vehicle types. On the whole the specifications of almost all models of the past 25 years are available.

Advanced measurement capabilities



Ride height measurement

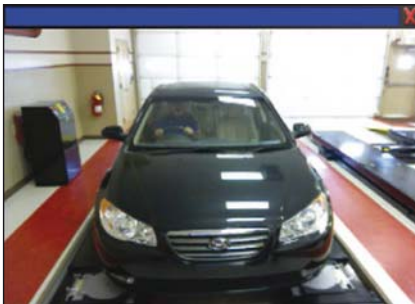
Measure ride height and obtain proper alignment specs for those vehicles requiring it.



EZ-Toe

- Turn the front wheel and access difficult adjustment points without losing contact with the control terminal.
- Significantly reduce front toe adjustment times!

Optional drive-on camera aid

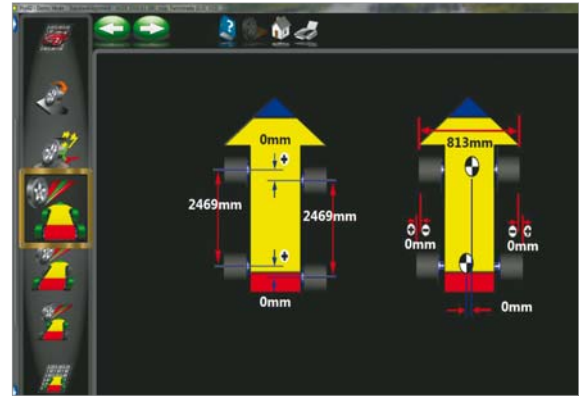
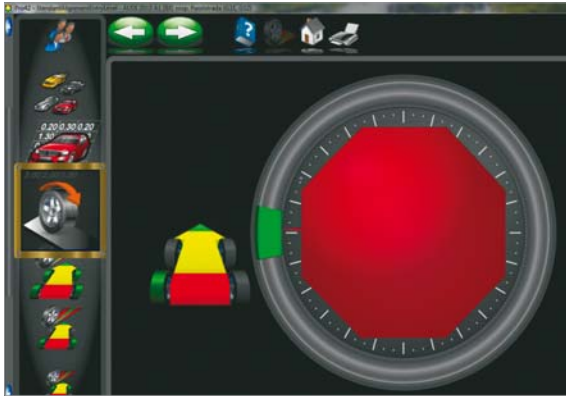


Optional drive-on camera aid

With this optional camera the operator is in a position to follow on the monitor how the car is driven onto the lift. This facilitates optimum positioning of the car on the alignment lift.



geoliner® 580 prism ELITE



The wheel aligner geoliner 580 prism is also available as geoliner 580 prism ELITE. This configuration offers the following additional features:

Rolling run-out compensation of the vehicle

If sufficient space is available, it is possible to perform run-out compensation without jacking up the vehicle. It is only necessary to roll the vehicle back and forth.

Consequently the vehicle remains at same level and the operator runs no risk of misinterpreting the results obtained.

It is also possible to perform a four-wheel split position run-out compensation if the vehicle being measured is too long for the rack.

Measurement of vehicle dimensions

This feature allows to measure set-back on front and rear as well as the wheel base. Wheel track difference of front and rear axles is also measured, the result is read out as axle offset. Those quick diagnostic features are an optimum supplement for customer services.

Features and specifications

FEATURES

General features	Measurements
Windows operating system	Caster & SAI on turntables
Pro42 software	SAI elevated
Vehicle specifications – 25+ years	Toe-out on turns
Custom vehicle specifications	Ride height modified vehicle specifications
Aligner system diagnostics	FrameCheck™ light truck frame angle for caster adjustment
Backup/Restore of calibration & setup data	

Operator efficiency adjustments	Adjustments
Integrated help system	Live caster, camber & toe – on turntables
3-D animations	Live caster, camber & toe – elevated
Tools, parts & adjustment instructions	Camber & toe – on turntables (Frozen caster)
Advanced customer database	Camber & toe – elevated (Frozen caster)
Customer database backup/restore	A-Arm adjust
Multiple print formats	Rear shims
Multiple units of measure	
Equalize toe warning	

SPECIFICATIONS

Standard accessories	Optional accessories
19" TFT monitor	+ 4" Universal wheel clamp extension kit
2 PODs and 2 targets	Equipment specifications
Universal wheel clamps 11"– 22"	Rim size 11"– 22"
Steering wheel holder	Tyre diameter up to 37"
Brake pedal depressor	Track width 48" – 96"
Mobile control terminal	Wheel base 70" – 180"
	Power requirements 230 V 1 ph 50 / 60 Hz, 6 A / 3 A

EMEA-JA

Snap-on Equipment s.r.l. · Via Prov. Carpi, 33 · 42015 Correggio (RE)
Phone: +39 0522 733-411 · Fax: +39 0522 733-479 · www.hofmann-europe.com

France

Snap-on Equipment France · ZA du Vert Galant · 15, rue de la Guivermone BP 97175
Saint-Ouen-l'Aumône · 95056 Cergy-Pontoise CEDEX
Phone: +33 134 48 58-78 · Fax: +33 134 48 58-70 · www.hofmann-france.fr

Germany

Snap-on Equipment GmbH · Konrad-Zuse-Straße 1 · 84579 Unterneukirchen
Phone: +49 8634 622-0 · Fax: +49 8634 5501 · www.hofmann-deutschland.com

Italy

Snap-on Equipment s.r.l.
Via Prov. Carpi, 33 · 42015 Correggio (RE)
Phone: +39 0522 733-411 · Fax: +39 0522 733-410
www.hofmann-italia.com

United Kingdom

Snap-on Equipment Ltd.
Unit 17 Denney Road, King's Lynn · Norfolk PE30 4HG
Phone: +44 118 929-6811 · Fax: +44 118 966-4369
www.snapon-equipment.co.uk

